

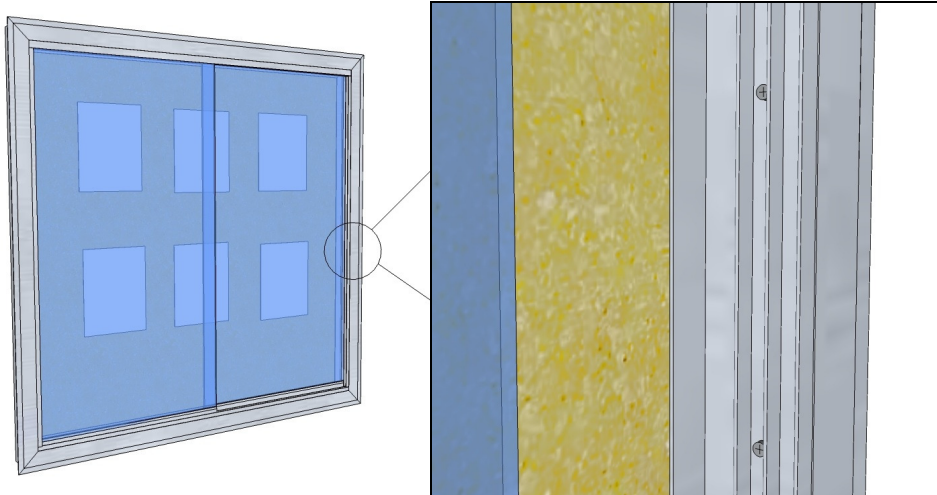
EQUIPMENT REQUIRED:

#2 Philips Head Screwdriver **Level** **Power Drill & Bits**
#8 or #10 screws (see below for size) **Shims**

Installation Notes:

-Properly securing the case depends on the configuration of the wall. Plan to install case screws into available blocking whether it's into the case uprights (left & right jams) OR thru the bottom & the top instead of the uprights.

Blocking IS available along the uprights:



1. Sit the case temporarily into place to check the opening. Use the level & shims to properly seat the case.
2. The screws for this version will need to be Pan Head & at least 2 ½" long. At a maximum 16 inches apart, drill the holes (size appropriate for the screw to pass) thru the rear track (shown above) & into the blocking.
3. Install screws.

NOTES: Make certain that the screws do not interfere with the wall rough opening. Countersink holes if using a flat head screw. Screw Head CANNOT sit more than 3/16" from the surface or the glass door will break.

Blocking only available upper & lower:

1. Sit the case temporarily into place to check the opening. Use the level & shims to properly seat the case. Sit the case back on the ground.
2. The screws for this version should be Pan Head & at least 1" long. Remove the upper & lower track. Drill holes at a maximum 16" apart large enough for the screw head to pass thru the interior wall.
3. Set the case into the opening. With the smaller bit, drill thru the case & blocking, then install the screws.

NOTES: #8 or #10 Screw minimum 1" long recommended. Make certain that the screws do not interfere with the wall rough opening.

Optional: If installing the screws just under the track, then use a using a flat head screw & countersink the holes so that the screw heads are flush & do NOT interfere with the track.